



SERVICE MANUAL

for

AUTOMATIC CAN VENDER

MODEL SV-250-5AC

&

MODEL SV 315-5AC

Service Manual Part Number 25-0111-000

July 1, 1977

**When ordering replacement parts,
include Model Number and Serial
Number of the unit.**

TABLE OF CONTENTS

	Page
TABLE OF CONTENTS	1
LIST OF FIGURES	2
GENERAL DESCRIPTION AND DESIGN DATA	3
INSTALLATION	4
Unpacking and Inspection	4
Selecting Location	4
Assembling Loose-shipped items.	4-5
Coin Mechanism Adjustment	5
Main Door Adjustments	5
Service Cord Ground	5
Loading the Vender	5
Installation Check List	5
OPERATION	6
Operating Controls and Indicators	6
Starting the Vender	6
Vend Cycle	6
Stopping the Vender	6
Counter	6
SERVICE AND MAINTENANCE	8
Cleaning	8
Lubrication	8
Changing Flavor Tabs	8
Ejector Mechanism Adjustments	8
TROUBLESHOOTING	9
Refrigeration System	9-10-11
Can Rack Assembly	11
Electrical	11-12
Coin Mechanism	12-13
PARTS LISTS	15
Introduction	15
Figure and Index Number	15
Part Number	15
Description	15
Quantity Per Assembly	15

LIST OF FIGURES

<u>Figure</u>	<u>Title</u>	<u>Page</u>
1.....	Vend Cycle	7
2.....	Wiring Diagram	14
3.....	Cabinet Assembly	16
4.....	Can Rack Assembly	19
5.....	Outer Door Assembly	22
6.....	Inner Door Assembly	25
7.....	Dashboard Assembly	27
8.....	Selector Button Assembly	29
9.....	Light Assembly	30
10.....	Sanyo Refrigeration Chassis Assembly	32
11.....	Tecumseh Refrigeration Chassis Assembly	35
12.....	Relay Housing Assembly	38

GENERAL DESCRIPTION

General Description

This Automatic Can Vendor is a compact, light weight, electrically powered unit designed for controlled cooling, and automatic vending, of canned products. The vender consists basically of a refrigeration system that includes a thermostat, a can rack, a can ejector mechanism, and a coin mechanism, all housed in an insulated sheet-metal cabinet.

The refrigeration assembly, with the exception of the evaporator and the evaporator fan motor, is mounted to the cabinet base with two rear brackets and two front bolts. The evaporator and evaporator fan motor are located between the can rack and the bottom of the cabinet.

DESIGN DATA

Name of Equipment	Automatic Can Vendor
Model	SV250-5AC
Over-all Dimensions:	
Width	33 5/16 inches
Depth	25 inches
Height	68 inches
Shipping Weight (approx.)	475 pounds
Capacity:	
10 ounce cans	280
12 ounce cans	250
Model	SV315-5AC
Over-all Dimensions:	
Width	33 5/16 inches
Depth	25 inches
Height	77 inches
Shipping Weight (approx.)	525 pounds
Capacity:	
10 ounce cans	325
12 ounce cans	295
Thermostat:	
Normal Cut-in	(Both Models) 38±1.5°
Normal Cut-out	(Both Models) 22±1.5°
Electrical Requirements	(Both Models) 115 volt, 60 cycle
Compressor Horsepower	(Both Models) ½ HP
Maximum Current Draw	(Both Models) 11.8 amps
Refrigerant:	
Type	(Both Models) R-12
Quantity	(Both Models) 12 ounces

INSTALLATION

UNPACKING AND INSPECTION

NOTE

The unit was thoroughly inspected before leaving the factory and the carrier has accepted and signed for it. Any damage or irregularities should be noted at the time of delivery and immediately reported to the delivering carrier. Request a written inspection report from the Claims Inspector to substantiate any necessary claim. File claim with the delivering carrier not with the manufacturer.

- a. Inspect outside of carton for visible damage.
- b. Pull staples on bottom. Lift carton up and off vender.
- c. Remove skid by tilting back for removal of front levelers, then tilt forward for removal of rear levelers. Reinstall levelers.
- d. Remove shipping tape and open vender.
- e. Inspect small loose-packed items listed below and make sure items are present.

Item	Part Number	Name	Quantity
1	20-2102-004	15 Cent Coin Instruction Decal	1
2	20-2102-006	20 Cent Coin Instruction Decal	1
3	20-2102-007	25 Cent Coin Instruction Decal	1
4	No Number	Flavor Tab Kit	1
5	No Number	Lock Cylinder Key	2
6	No Number	Coin Box Key (Optional)	2
7	No Number	Inncr Door Keys	2

SELECTING LOCATION

When installing the can vender for use, select a location that is easily accessible and will allow ample room for servicing the vender. Location should be near an electrical outlet with the proper voltage. Allow a minimum space of three inches behind the vender for proper air circulation.

- b. Unlock inner door and pull it open, separating inner and outer door. Remove dashboard cover.
- c. Slide flavor tab between flavor lens and lens retainer. Make certain flavor tab is right side up.

ASSEMBLING LOOSE-SHIPED ITEMS

Flavor Tabs

- a. Unlock and open outer door.

LEVELERS

Adjust each leveling screw until the vender is level in all directions. Vender must be level.

Coin Instruction Decal

Select proper price decal. Peel protective backing sheet from decal. Apply decal to rectangular area at top half of coin insert casting. Make certain decal is right side up and evenly applied.

COIN MECHANISM ADJUSTMENT

See instruction sheet with each coin mechanism.

MAIN DOOR ADJUSTMENTS

Gasket Seal. If main door gasket does not seal properly, operation of refrigeration system will be affected. Check and adjust door gasket as follows:

Unlatch and open door. Insert sheet of paper between door gasket and cabinet. Close and latch main door. Attempt withdrawal of paper. Door gasket should retain paper.

NOTE

If door gasket grips paper, seal adjustment is not necessary. If paper can be easily moved, adjust door seal as outlined in following steps.

Unlatch and open main door. Adjust upper and lower hinge inward slightly. Recheck door gasket seal and, if necessary, make additional adjustments as outlined in steps above until door gasket seal is tight.

SERVICE CORD GROUND

Vender must be grounded. The Vender service cord is equipped with a three-prong plug that grounds the unit automatically when inserted into a three-prong outlet. If a three-prong outlet is not available, install a two-prong adapter with a pigtail ground wire in the two-prong outlet, and plug the vender power cord into the adapter. Make sure the pigtail ground wire on the adapter is connected to a good ground.

LOADING THE VENDER

The can rack is composed of five columns. Each column normally contains a different flavor. To load each column in the can rack, proceed as follows:

a. Make certain flavor to be loaded corresponds to flavor shown on dashboard panel tab for that particular can column. Columns start number one on the left facing the machine with door open. Selector switches are marked one thru five on back of dashboard panel.

b. Load cans to top of each column until serpentine can channel and top shelf is full.

INSTALLATION CHECK LIST

Make certain the following installation conditions exist before starting the can vender.

a. All components are installed on vender and are in good condition.

b. Vender is clean, especially lighted sign lens.

c. Vender is properly located for access to power source outlet and is level.

d. Coin mechanism adjustment has been made, if necessary.

e. Main door assembly and gasket seal have been adjusted.

f. Thermostat is set for correct temperature range (between 3 and 5).

g. Electrical switches, and other components are securely mounted and in good operating condition.

h. Vender has been properly loaded and flavor placed in each column is identical to corresponding flavor tab in door.

i. Service cord plug-in receptacle is grounded or ground adapter has been installed.

OPERATION

OPERATING CONTROLS AND INDICATORS

Thermostat. The thermostat automatically controls the temperature of the canned products by controlling the refrigeration cycle. A temperature sensing element, located in the center of the evaporator, senses the temperature of the cabinet. Whenever the cabinet temperature exceeds or falls below the preset temperature range, the thermostat will start or stop the compressor and condenser fan motor to insure maintenance of correct cabinet temperature.

Coin Mechanism. Refer to coin mechanism service manual.

Selector Button. The selector buttons, located on the main door dashboard panel, control the actual vending of the can. When a selector button is pressed, the microswitch behind the button closes a circuit to the vend solenoid on the can ejector mechanism. The energized vend solenoid retracts the solenoid yoke cams and the vended can is delivered to the can chute.

Coin Release Lever. The coin release lever is located on the main door dashboard panel. Turn the lever to release defective coins.

Sold-out Light. The sold-out light, located to the right of each flavor tab on the main door dashboard panel, indicates no cans are in the vend position in that particular can rack column when lit.

STARTING THE VENDOR

Connect vendor service cord to grounded outlet of proper voltage and observe operation of vendor. The compressor, condenser fan motor, and evaporator fan motor will all start, and lens lamp and selector panel lamps must light. When the set temperature is reached, the evaporator fan motor will continue to run, and the compressor and the condenser fan motor will be cycled on and off by the thermostat control.

Vend Cycle. Figure 1, page 7, illustrated the sequences of mechanical (block arrows) and electrical (line arrows) events that occur during the vend cycle.

Stopping the Vendor. To stop the vendor, disconnect vendor service cord from electrical outlet.

Counter. Counter connects to No. 8 and No. 9 of the relay housing plug.

WARNING

THIS MACHINE IS EQUIPPED WITH A IN LINE FUSE TO PROTECT THE VENDING CIRCUIT ONLY. THE REFRIGERATION SYSTEM IS NOT ON THIS FUSE. REFER TO WIRE DIAGRAM FOR THE POSITION OF THIS FUSE.

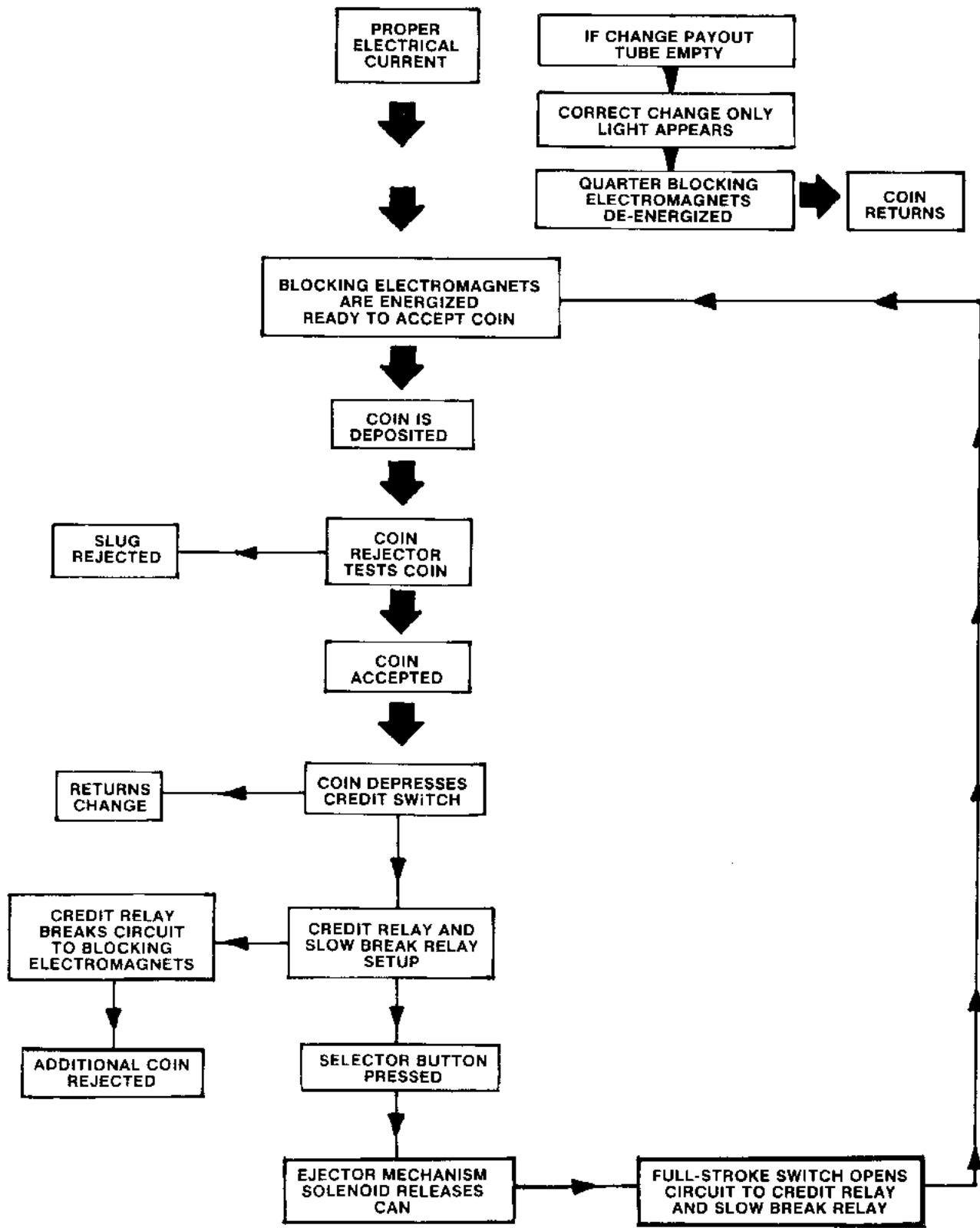


Figure 1
 VENDCYCLE
 7

SERVICE AND MAINTENANCE

CLEANING

Vendor Exterior. Wash vendor with soap and water. Use soft cloth to wipe surface dry. Polish exterior surface with auto wax.

Vendor Interior. Wash interior of cabinet with soap and water. Odors may be eliminated by including baking soda or ammonia in cleaning solution. Remove and clean drain hose to eliminate any deposits that may restrict condensate water flow.

Refrigeration System. Clean dust from condenser with soft bristle brush or vacuum cleaner. Remove dirt or debris from refrigeration system compartment. Remove and clean condensate pan.

Vend Rack. Remove vend rack from cabinet. Wash vend rack with liquid detergent and flush with clean warm water.

LUBRICATION

The refrigeration system is permanently lubricated and does not require any additional lubrication. Lubricate coin mechanism in accordance with manufacturer's instructions.

CHANGING FLAVOR TABS

- a. Disconnect vendor service cord.
- b. Unlock and open outer door.
- c. Unlock and open inner door. Remove inside dashboard cover.
- d. Slide old flavor tab out from between lens retainer and lens, and insert new flavor tab. Make certain new flavor tab is right side up.

CAUTION

If more than one flavor tab is being changed, make certain tab is same flavor as product in corresponding column of can rack.

- e. Complete procedure by reversing steps a through c, proceeding.

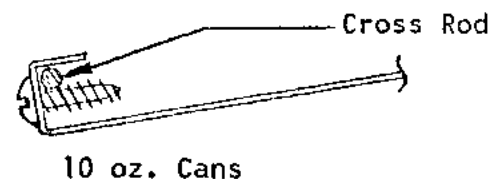
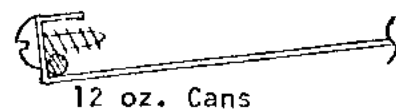
EJECTOR MECHANISM ADJUSTMENTS

Sold-out Switch Adjustment. The sold-out switch has been adjusted at the factory. If readjustment is necessary, proceed as follows:

- a. Disconnect vendor service cord.
- b. If applicable can column is not empty, block cans from rolling over sold-out switch leaf.
- c. Slowly depress sold-out switch leaf. Listen for sold-out switch to "click" twice.
- d. If no "click" is heard, remove solenoid cover and bend rear of actuator plate, where the sold-out leaf is fastened, as shown as item 3, figure 5, on page 20, to the rear of machine until the "click" of the switch is heard.
- e. Repeat steps d and e until a distinct "click" is heard in the movement of the sold-out leaf.

INSTRUCTIONS TO CONVERT FROM 12 OZ. TO 10 OZ. CANS

Each column can be changed individually for either 12 or 10 oz. cans. For each column you wish to vend 10 oz. cans, remove the two sheet metal screws from item no. 7 in the can rack assembly, fig. 4 page 19 of the service manual. Lower the front of the can jump guard, and replace the two screws making sure they go below the cross rod. See illustration below. You are now ready to vend 10 oz. cans.



TROUBLESHOOTING

Trouble	Probable Cause	Remedy
REFRIGERATION SYSTEM		
Cabinet temperature too low - product frozen.	1. Thermostat control set too low.	1. Turn control knob counter-clockwise to warmer setting.
	2. Inoperative thermostat control.	2. Replace thermostat control.
Cabinet temperature too high - product is warm.	1. Thermostat control set too high.	1. Turn control knob clockwise to colder setting.
	2. Connector tube to control bulb touching other metal parts.	2. Separate connector tube from other metal parts.
	3. Inoperative thermostat control.	3. Replace thermostat control.
Compressor "short cycle."	1. Dirty condenser.	1. Clean condenser.
	2. Low line voltage.	2. Check outlet voltage while vendor is running.
	3. Thermostat control knob not at correct setting.	3. Turn thermostat control knob to correct setting.
	4. Inoperative condenser fan motor.	4. Replace condenser fan motor.
	5. Inoperative overload protector.	5. Replace overload protector.
	6. Inoperative starting relay.	6. Replace starting relay.
	7. Inoperative thermostat control.	7. Replace thermostat control.

TROUBLESHOOTING (continued)

Trouble	Probable Cause	Remedy
Compressor will not run.	<ol style="list-style-type: none"> 1. Power source interrupted. 2. Broken connection in wiring harness. 3. Inoperative thermostat control. 4. Inoperative starting relay. 5. Inoperative overload protector. 	<ol style="list-style-type: none"> 1. Check service cord connection. Check fuses. 2. Replace wiring harness. 3. Replace thermostat control. 4. Replace starting relay. 5. Replace overload protector.
Compressor runs but will not refrigerate.	<ol style="list-style-type: none"> 1. Loss of refrigerant charge. 2. Kinked refrigerant lines. 3. Compressor damaged internally. 4. Moisture in refrigeration system. 	<ol style="list-style-type: none"> 1. Replace refrigeration system. 2. Replace refrigeration system. 3. Replace refrigeration system. 4. Replace refrigeration system.
Compressor will not shut off.	<ol style="list-style-type: none"> 1. Thermostat control point stuck. 2. Air leakage into vendor cabinet. 3. Dirty condenser. 4. Bent capillary tube. 	<ol style="list-style-type: none"> 1. Replace thermostat control. 2. Check and adjust door seal. 3. Clean condenser. 4. Replace refrigeration system.
Ice on evaporator.	<ol style="list-style-type: none"> 1. Thermostat control set too cold. 2. Evaporator fan not turning. 3. Air leakage into vendor cabinet. 4. Dirty evaporator. 	<ol style="list-style-type: none"> 1. Adjust thermostat control to a warmer setting. 2. Repair or replace fan and motor. 3. Check and adjust door seal. 4. Clean evaporator.

TROUBLESHOOTING (continued)

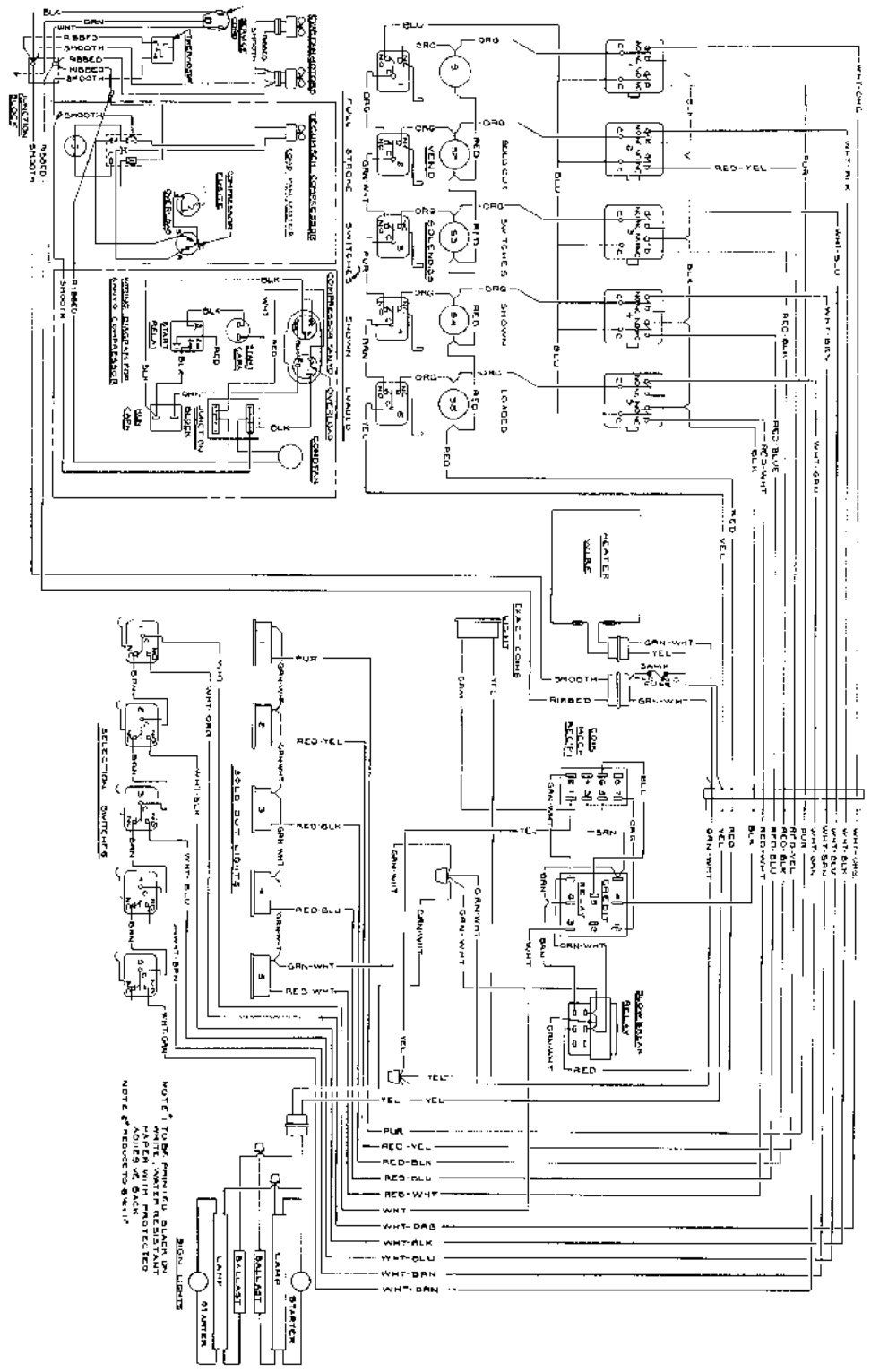
Trouble	Probable Cause	Remedy
Noisy refrigeration system.	<ol style="list-style-type: none"> 1. Fan blades bent or hitting obstruction. 2. Loose parts. 3. Inoperative compressor. 	<ol style="list-style-type: none"> 1. Repair or replace fan blades. Clear obstruction. 2. Tighten all mountings. 3. Replace refrigeration system.
CAN RACK ASSEMBLY		
Cans do not travel down column freely.	<ol style="list-style-type: none"> 1. Vendor not level. 2. Dirt or syrup deposited on can rack. 	<ol style="list-style-type: none"> 1. Level vendor. 2. Clean and lubricate can rack.
Vend solenoid and ejector	<ol style="list-style-type: none"> 1. Syrup and dirt has accumulated on mechanism. 2. Loose pivot bolts. 3. Bent ejector linkage. 	<ol style="list-style-type: none"> 1. Clean and lubricate ejector mechanism. 2. Tighten bolts. 3. Straighten or replace linkage.
Two cans delivered from same column on one vend.	<ol style="list-style-type: none"> 1. Vend solenoid and ejector mechanism too slow or dirty. 2. Can jump guard adjusted too high. 	<ol style="list-style-type: none"> 1. Clean and lubricate mechanism. 2. Adjust can jump guard to lower position.
Last one or two cans in column will not roll into vend position.	<ol style="list-style-type: none"> 1. Sold-out switch leaf is set too high. 2. Vendor not level. 	<ol style="list-style-type: none"> 1. Adjust sold-out switch leaf. 2. Adjust leveling legs.
ELECTRICAL		
Sold-out lamp does not light.	<ol style="list-style-type: none"> 1. Lamp burned out. 2. Loose connection on sold-out switch. 3. Sold-out switch leaf set too low. 	<ol style="list-style-type: none"> 1. Replace lamp. 2. Tighten connections. 3. Adjust switch leaf.

TROUBLESHOOTING (continued)

Trouble	Probable Cause	Remedy
Cans will not vend from one column.	<ol style="list-style-type: none"> 1. Corresponding selector switch is defective or has loose connection. 2. Inoperative vend solenoid. 3. Loose connection on sold-out switch. 4. Sold-out switch leaf set too low. 	<ol style="list-style-type: none"> 1. Replace selector switch. 2. Replace vend solenoid. 3. Tighten connection. 4. Adjust switch leaf.
Vendor preselects one column when coins are deposited.	<ol style="list-style-type: none"> 1. Selector switch lever bent or switch is defective. 2. Full-stroke switch lever out of adjustment. 	<ol style="list-style-type: none"> 1. Adjust switch lever or replace switch. 2. Adjust full-stroke switch lever.
Power to refrigeration	<ol style="list-style-type: none"> 1. Loose connection to wiring harness. 2. Blown fuse. 3. Defective wiring harness. 	<ol style="list-style-type: none"> 1. Tighten connections. 2. Replace 3A SB Fuse. 3. Replace wiring harness.
COIN MECHANISM		
Coin mechanism will not accept coins.	<ol style="list-style-type: none"> 1. Inoperative coin mechanism. 2. Vend solenoid stuck in mid-stroke due to bent or dirty parts. 3. Loose connection on sold-out switch. 4. Defective credit relay. 	<ol style="list-style-type: none"> 1. Refer to manufacturer's instruction manual. 2. Replace bent parts. Clean and lubricate ejector mechanism. 3. Tighten connection. 5. Replace credit relay.

TROUBLESHOOTING (continued)

Trouble	Probable Cause	Remedy
<p>Coin mechanism will take money but not deliver can. Additional coins are accepted.</p>	<ol style="list-style-type: none"> 1. Inoperative vend switch in coin mechanism. 2. Inoperative credit relay. 3. Inoperative slow-break relay. 	<ol style="list-style-type: none"> 1. Refer to manufacturer's instruction manual. 2. Replace credit relay. 3. Replace slow-break relay.
<p>Coin mechanism will take money but will not vend. All additional coins are rejected.</p>	<ol style="list-style-type: none"> 1. Bent coin stuck in coin mechanism. 2. Inoperative credit relay. 3. Loose connection on stroke switch. 	<ol style="list-style-type: none"> 1. Remove defective coin. 2. Replace credit relay. 3. Tighten connection.



Wiring Diagram
 5 Selection Automatic
 Can Vendor

PARTS LIST

NOTE

REPLACEMENT OF PARTS IN THESE UNITS WITH OTHER THAN PARTS APPROVED BY THE MANUFACTURER VOIDS THE WARRANTY OF THESE UNITS.

INTRODUCTION

Exploded views are indexed to the parts lists and illustrate the listed items and their physical relationship to each other. The columnar data included in the parts list are explained in the following paragraphs.

FIGURE AND INDEX NUMBER

The number preceding the hyphen in the Index Number column is the number of the figure. The number following the hyphen is the page of the figure. The numbers below the figure and index number are the items and description, and number of item on corresponding figure.

VENDOR KEY CODES

Key A - Model SV250-5AC

Key B - Model SV315-5AC

PART NUMBER

All items are listed by the manufacturers part numbers. Where no number exists, the designation "No Number" is used.

DESCRIPTION

The listed items are described, as necessary, to completely identify the part. The description of the items which are part of a higher assembly is identified from the description of the higher assembly.

QUANTITY PER ASSEMBLY

This column is subdivided into different versions of the automatic can vendors, and is keyed to these vendors as shown to the left under vendor key codes.

The quantities listed in this column indicate the number of each part required for the next higher assembly. The abbreviation "R" in this column indicates the item is listed as a reference. The quantity requirements for these items are shown where the item is listed as a component of its next higher assembly. The abbreviation AR means "As required".

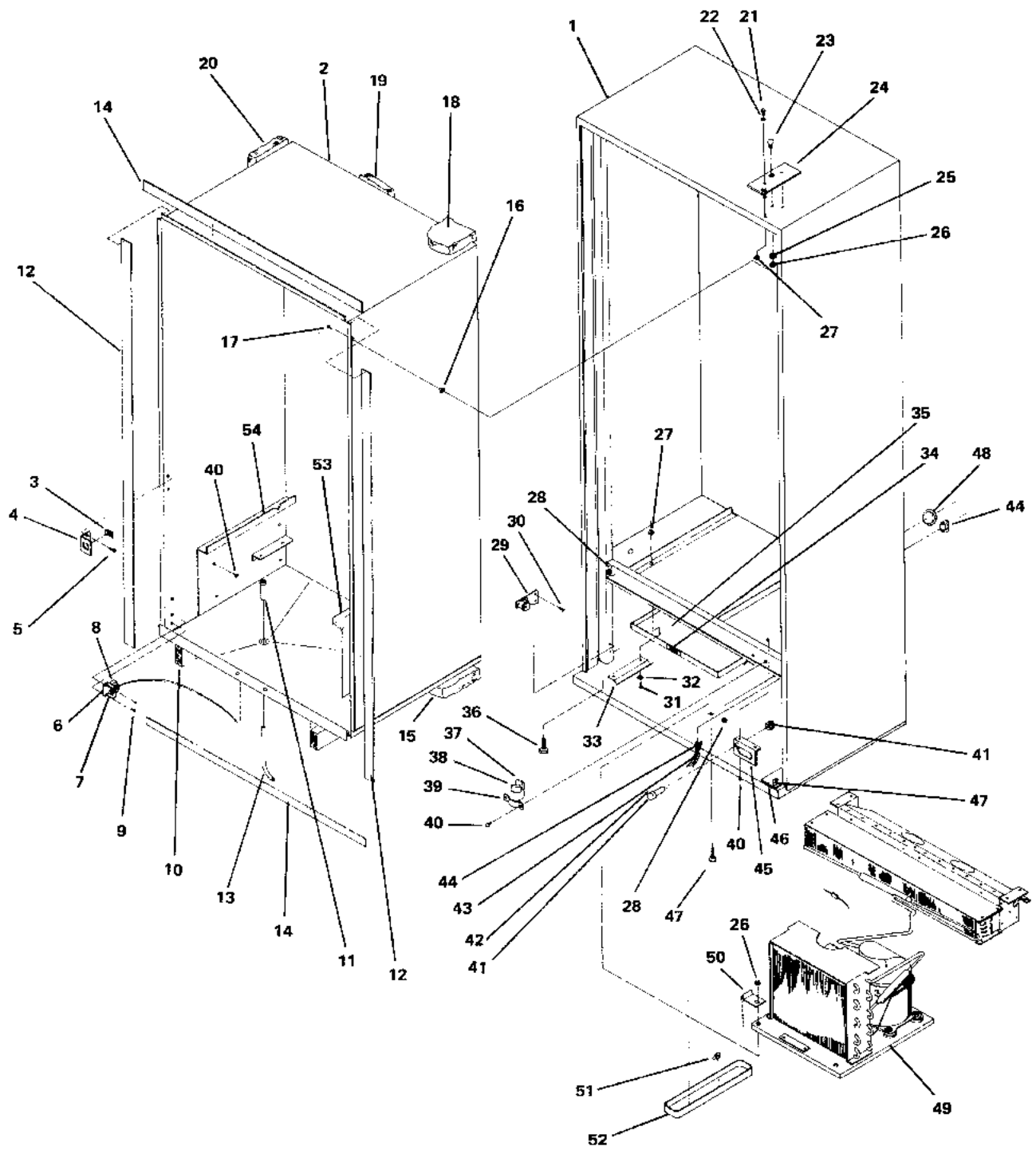


Figure 3
 CABINET ASSEMBLY
 16

FIGURE 3 CABINET ASSEMBLY

FIGURE & INDEX NO.	PART NUMBER	DESCRIPTION	QTY. PER ASSEMBLY	
			A	B
3-16	60-0032	Cabinet Assembly SV-250	1	-
3-16	60-0037	Cabinet Assembly SV-315	-	1
1	60-0005	.Cabinet Weld Assembly SV-250	1	-
	60-0016	.Cabinet Weld Assembly SV-315	-	1
2	60-0004	.Liner Assembly, Cabinet - SV-250		
	60-0028	.Liner Assembly, Cabinet - SV-315		
3	25-0115	.Nut, Square, Door Lock ½-13 (Furnished with Door Lock)	1	1
4	25-0048	.Bracket, Door Lock Nut	1	1
5	20-0469-024	.Screw, Thread Forming, Phillips Pan Head ¼-28 by 1 in.	2	2
6	33-2408	.Bracket, Thermostat	1	1
7	33-3084	.Decal, Thermostat	1	1
8	33-4123-001	.Thermostat (Furnished with refrigeration system)	1	1
9	20-1141-001	.Screw, Sheet Metal, Phillips Pan Head, No. 8 by ½ in.	2	2
10	20-1886	.Support, Wood Liner	2	2
11	10-0042	.Tube, Drain	1	1
12	20-1475-010	.Breaker Strip, Sides - SV-250	2	-
	20-1475-012	.Breaker Strip, Sides - SV-315	-	2
13	09-0004-300	.Hose, Drain	1	1
14	20-1475-011	.Breaker Strip, Top & Bottom	2	2
15	20-1883-004	.Insulation, Cabinet Bottom	1	1
16	09-0004-300	.Grommet, Plastic	8	8
17	20-0468-001	.Screw, Sheet Metal, Phillips Truss Head, No. 10 by 1 in.	8	8
18	20-1881-004	.Insulation, Cabinet Top	1	1
19	20-0952-005	.Insulation, Cabinet Back - SV-250	1	-
	20-0952-006	.Insulation, Cabinet Back - SV-315	-	1
20	20-1882-004	.Insulation, Cabinet Sides - SV-250	2	-
	20-1882-005	.Insulation, Cabinet Sides - SV-315	-	2
21	05-0367	.Screw, Machine, One Way Slotted Head ¼ - 20 by ¾ in.	2	2
22	20-0717-001	.Washer, Lock, ¼ in. Ext. Tooth	2	2
23	05-0999	.Bolt, Carriage 5/16 - 18 by ¾ in.	3	3
24	60-0017	.Hinge, Upper	1	1
25	18-6148	.Washer, Lock 5/16 in.	5	5
26	20-0498-007	.Nut, Hex, 5/16 in.	5	5
27	20-0498-024	.Nut, Twin Whiz Hex, ¼ - 20	6	6
28	20-0274-004	.Bushing, Snap, 9/16 Dia. Hole	4	4
29	60-0007	.Bracket Assembly, Door Lift	1	1
30	05-0434	.Screw, Sheet Metal, Slotted Hex Head, No. 14 by 3/8 in.	2	2
31	20-0716-006	.Screw, Cap, Slotted Hex Head ¼ - 20 by 5/8 in.	4	4
32	20-0717-001	.Washer, Lock, ¼ in. Ext. Tooth	4	4
33	25-0073	.Bracket, Loading Rack Support	2	2
34	25-0139	.Decal, Loading Rack	1	1
35	25-0072	.Rack, Loading	1	1
36	09-0101-400	.Leg, Leveling	4	4
37	20-0407-000	.Seal, Refrigeration Tube	1	1

FIGURE 3 CABINET ASSEMBLY

FIGURE & INDEX NO.	PART NUMBER	DESCRIPTION	QTY. PER ASSEMBLY	
			A	B
3-16				
38	20-0407-001	.Seal, Refrigeration Tube	1	1
39	20-0156	.Cover, Refrigeration Tube	1	1
40	20-1141-001	.Screw, Sheet Metal, Phillips Pan Head, No 8 by ½ in.	12	12
41	25-0247	.Fuse Holder with Nut	1	1
42	25-0173	.Fuse, 3AG-3A Slo Blo (313003)	1	1
43	33-4795-002	.Heater Wire	1	1
44	09-1051-801	.Bushing, Strain Relief	2	2
45	25-0119	.Bracket, Connector & Fuse Mounting	1	1
46	60-0018	.Hinge, Lower	1	1
47	09-0002-900	.Bolt, Carriage, 5/16 - 18 by 1¼ in.	2	2
48	25-0135	.Plug, Cap - BP 1.375	1	1
49	20-1920-000	.Refrigeration System ½ HP Tecumseh (See Fig. 10 Page 33)	1	1
49	20-1920-002	.Regriferation System ½ HP Sanyo (See Fig. 9 Page 30)	1	1
50	20-1925	.Clip, Anchor	1	1
51	20-0341	.Clip, Tube	1	1
52	20-0623	.Pan, Condensate Drain	1	1
53	60-0058-001	.Support, Can Rack, Right-Hand	1	1
54	60-0058-002	.Support, Can Rack, Left-Hand	1	1

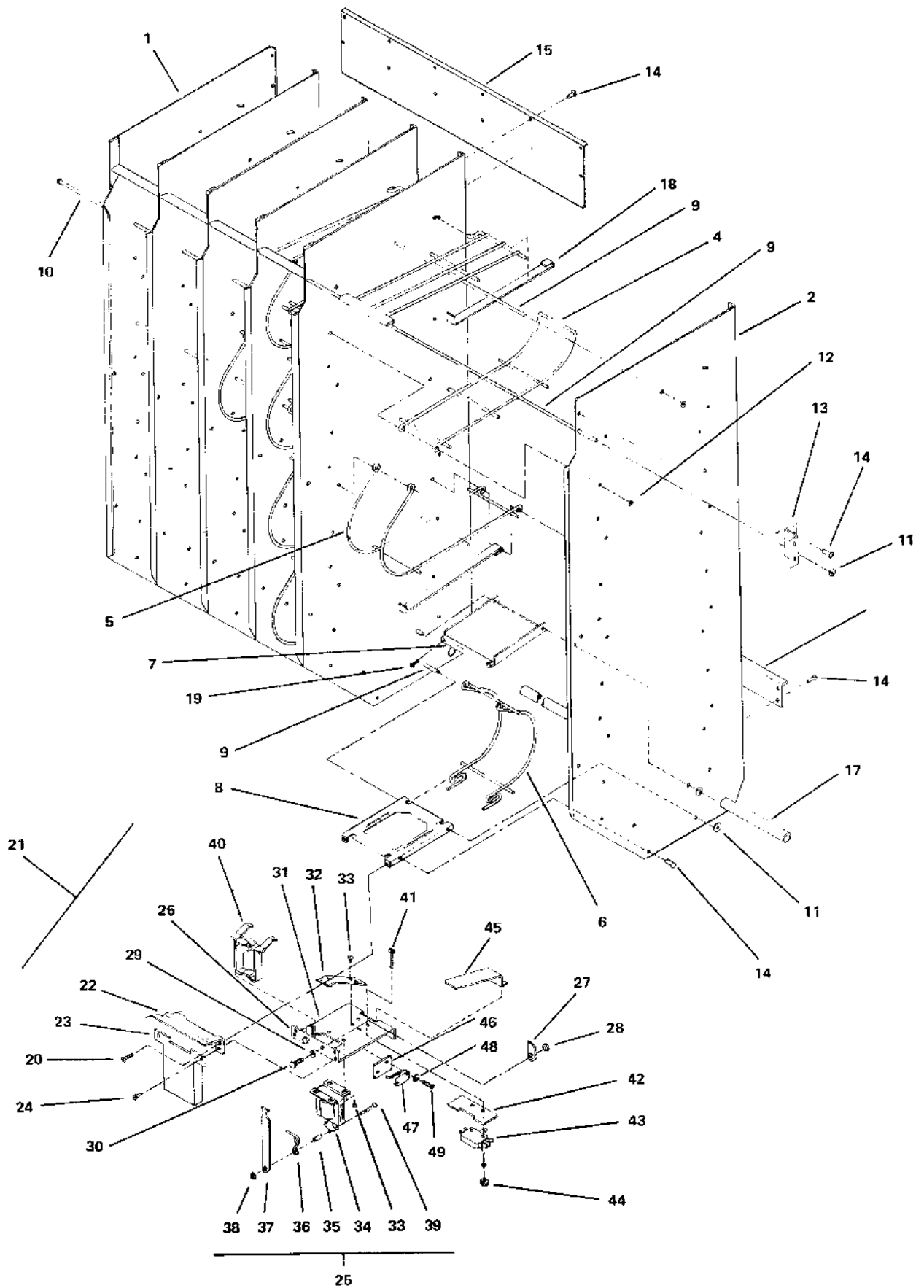


Figure 4
 CAN RACK ASSEMBLY
 19

FIGURE 4 CAN RACK ASSEMBLY

FIGURE & INDEX NO.	PART NUMBER	DESCRIPTION	QTY. PER ASSEMBLY	
			A	B
4-19	60-0040	Can Rack Assembly SV 250-5AC	1	—
4-19	60-0076	Can Rack Assembly Sv 315-5AC	—	1
1	25-0178	.End Panel Left-Hand	1	—
1	25-0256	.End Panel Left-Hand	—	1
2	25-0177	.Partition & Right-Hand End Panel	5	—
2	25-0255	.Partition & Right-Hand End Panel	—	5
3	33-1977	.Shelf, Upper	5	5
4	33-1975	.Top Loop, Can Rack	5	5
5	33-1974	.Center Loop, Can Rack	25	35
6	33-1976	.Bottom Loop, Can Rack	5	5
7	33-2209	.Guard, Can Jump	5	5
8	33-1998	.Shelf, Sold Out	5	5
9	33-2473	.Rod, Tie 1/8 Dia.	4	4
10	33-2474	.Rod, Tie 5/32 Dia.	19	25
11	33-2477	.Nut, Push, 1/8 Dia. Rod	4	4
12	33-2476	.Nut, Push, 5/32 Dia. Rod	19	25
13	25-0179	.Retainer, Rack	2	2
14	05-0667	.Rivet, Squeeze, 1/8 Dia.	32	32
15	33-2523	.Top Tie Strip & Can Guide	1	1
16	33-2206	.Tie Strip	1	1
17	25-0181	.Tube, Rack Support	1	1
18	33-1999	.Retainer Strip	30	40
19	20-0468-004	.Screw, Sheet Metal, Phillips Truss Head, No. 6 by 1/2 in.	10	10
20	20-1141-001	.Screw, Sheet Metal, Phillips Pan Head No. 8 by 1/2 in.	10	10
21	60-0041	.Ejector Bar Assembly	1	1
22	33-1981	..Plate Ejector 5 Column	1	1
23	33-1812	..Shield, Solenoid	5	5
24	20-0470-006	..Screw, Thread Cutting, Phillips Round Head, No. 8-32 by 1/2 in.	10	10
25	60-0042	..Ejector Mech.	5	5
26	50-0346-003	...Cam, Escapement, Left-Hand	1	1
27	50-0346-004	...Cam, Escapement, Right-Hand	1	1
28	20-1129	...Nut, Shoulder	2	2
29	20-0729-004	...Washer, Flat, No. 10	2	2
30	20-1200	...Screw, Cap, Hex Head, No. 10 by 3/8 in., Self Locking	2	2
31	20-1130	...Plate, Actuator	1	1
32	20-1127	...Spring, Flat	1	1
33	20-0470-002	...Screw, Thread Cutting, Phillips Round Head, No. 10-32 by 5/16 in., Sems	6	6
34	09-1050-300	...Solenoid	1	1
35	20-1285	...Spacer, 1/2 in.	1	1
36	20-1421	...Spring, Solenoid	1	1
37	20-1388	...Bar, Lockout	1	1
38	20-0498-004	...Nut, Hex, No. 8-32	1	1
39	20-0716-003	...Screw, Cap, Hex Head, No. 8-32 by 1 in.	1	1
40	50-0361	...Yoke, Ejector	1	1

FIGURE 4 CAN RACK ASSEMBLY

FIGURE & INDEX NO.	PART NUMBER	DESCRIPTION	QTY. PER ASSEMBLY	
			A	B
4-19				
41	20-0469-004	...Screw, Machine, Phillips Truss Head, No. 6-32 by 1 in.	2	2
42	20-0155	...Insulator, Switch	1	1
43	20-0158	...Switch, Sold Out	1	1
44	20-0498-002	...Nut, Hex, No. 6-32, Keps	2	2
45	20-0173-002	...Leaf, Sold Out Switch	1	1
—	20-0496-003	...Wire, Orange Jumper (Not Shown)	1	1
—	25-0276-000	...Wire Harness, Cabinet (Not Shown)	1	1
46	20-0144	Insulator	1	1
47	20-0145	Full Stroke Switch	1	1
48	20-0798	Insulator	1	1
49	20-0470-004	4-40 x 5/8 Phil. Pan Hd. Type 1 S.T.S.	2	2

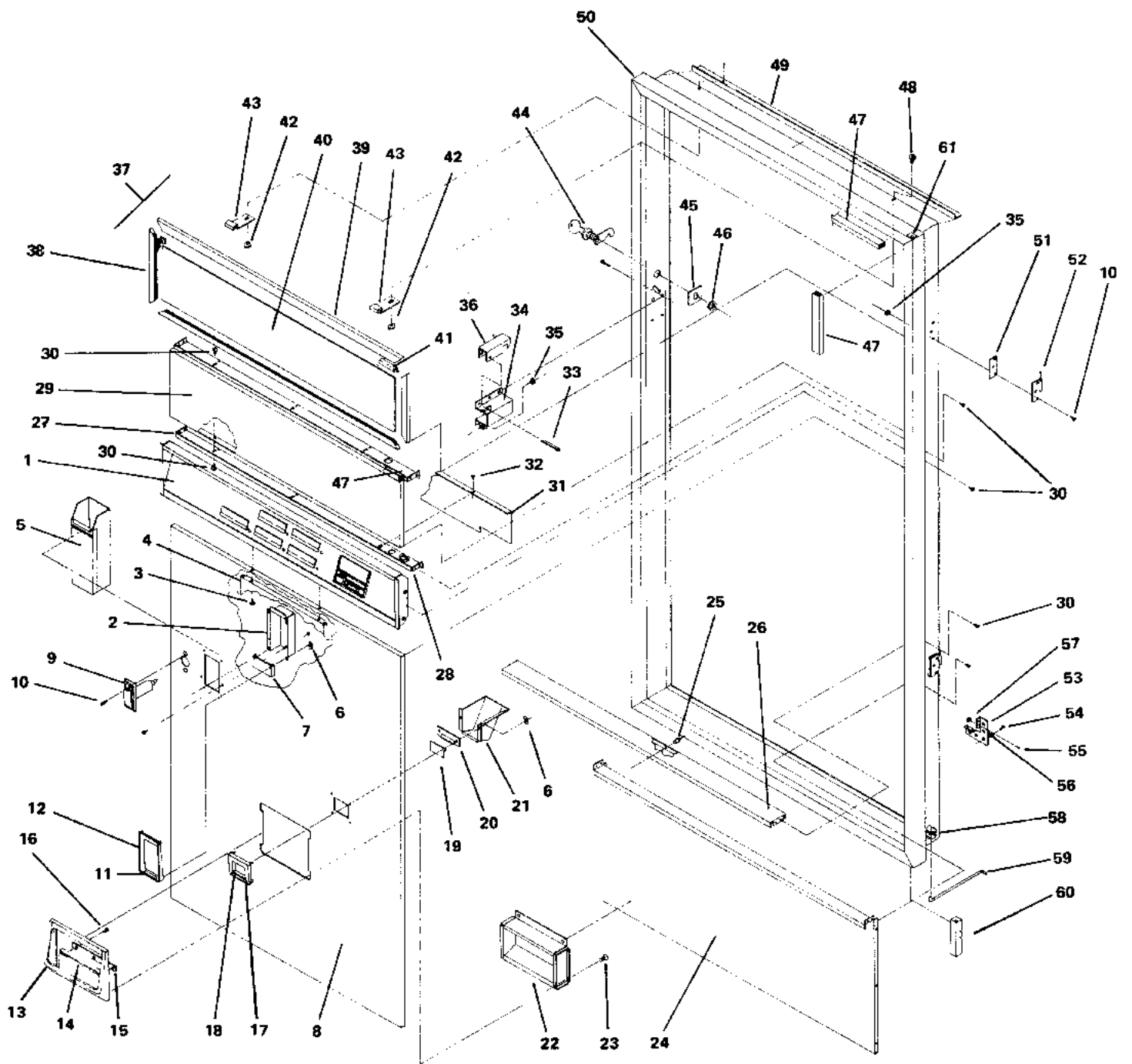


FIGURE 5
 OUTER DOOR ASSEMBLY

FIGURE 5 OUTER DOOR ASSEMBLY

FIGURE & INDEX NO.	PART NUMBER	DESCRIPTION	QTY. PER ASSEMBLY	
			A	B
5-22	60-0014	Final Door Assembly, SV 250	1	—
5-22	60-0035	Final Door Assembly, SV 315	—	1
1	60-0002	.Dashboard Assembly - See Fig. 7 (Page 27)	1	1
2	25-0071	.Cover, Tab Holder	1	1
3	20-1141-001	.Screw, Sheet Metal, Phillips Pan Head, No. 8 by ½ in.	2	2
4	25-0122	.Stiffener, Front Panel	1	1
5	50-0463	.Box, Crown, Assembly	1	1
6	33-4982	.Nut, Self Threading	8	8
7	20-1998	.Hanger, Crown Box	1	1
8	25-0055	.Panel, Door-Order by description (Kashmir Walnut, Honey Pecan, Painted (Color))	1	1
9	25-0098	.Lock, T-Handle	1	1
10	20-0469-031	.Screw, Machine, Slotted Flat Head No. 10-32 by ½ in.	8	8
11	33-4542	.Decal, Pull Tab	1	1
12	33-4282	.Bezel, Crown Puller	1	1
13	33-2285	.Trim, Can Chute	1	1
14	33-4456	.Bumper, Can	1	1
15	33-2462	.Retainer, Can Bumper	1	1
16	32-0289	.Screw, Thread Rolling, Phillips Pan Head No. 6-32 by ¼ in.	3	3
17	33-4281	.Bezel, Change	1	1
18	33-4984	.Decal, Change Bezel	1	1
19	20-0102	.Door, Coin Return	1	1
20	20-1422	.Tab, Anti Pay Switch	1	1
21	20-1649	.Cup, Coin Return	1	1
22	60-0008	.Chute, Outer Door, Weld Assembly	1	1
23	05-0421	.Screw, Thread Cutting, Slotted Pan Head No. 8-32 by ¼ in.	5	5
24	25-0066	.Bulkhead, Lower	1	1
25	05-0667	.Rivet, Pop 1/8 Dia.	2	2
26	25-0089	.Brace, Center Door	1	1
27	25-0065	.Brace, Upper Door	1	2
28	25-0147	.Bushing, Heyco SB-1093-15	—	1
29	25-0143	.Panel, Front Top - Order by Description (Honey Pecan, Kashir Walnut, Painted- Specify Color)	—	1
30	20-1141-001	.Screw, Sheet Metal, Phillips Pan Head No. 8 by ½ in.	51	61
31	25-0120	.Shield, Wire	1	1
32	05-0420	.Screw, Sheet Metal, Slotted Hex Head No. 8 by ¼ in. Blunt Point	3	3
33	25-0187	.Pin, Cotter	1	1
34	60-0015	.Housing, Lock, Weld Assembly	1	1
35	20-0498-023	.Nut, Hex Twin Whiz, No. 10-32	8	8
36	60-0043	.Latch, Door	1	1
37	60-0054-xxx	.Lens Assembly - Order by Description	1	1
38	20-2101-001	.Side, Sign Frame	2	2

FIGURE 5 OUTER DOOR ASSEMBLY

FIGURE & INDEX NO.	PART NUMBER	DESCRIPTION	QTY. PER ASSEMBLY	
			A	B
5-22				
39	20-2101-011	..Top & Bottom, Sign Frame	2	2
40	25-0094-xxx	..Lens, Sign-Order by description	1	1
41	96-0272	..Gasket, Sign Frame	83"	83"
42	20-0498-022	..Nut, Hex, Twin Whiz No. 8-32	2	2
43	25-0196	..Clamp, Lens Assembly	2	2
44	25-0097	..Lock & Cam, Inner Door	1	1
45	00-6283	..Plate, Lock Back-up	1	1
46Nut, Hex - Furnished with Lock	1	1
47	06-0006	..Gasket, .250 x .500 Airtex Poly	86"	86"
48	20-0469-003	..Screw, Machine, Phillips Truss Head, No. 8-32 by 3/8 in.	2	2
49	25-0151	..Rain Drain	1	1
50	60-0030	..Frame, Door-SV 250	1	--
50	60-0031	..Frame, Door-SV 315	--	1
51	25-0059	..Spacer, Hinge	2	2
52	25-0101-001	..Hinge, 3 x 3 Male Butt	2	2
53	25-0088	..Bracket, Hinge Block	2	2
54	20-0469-030	..Screw, Machine, Slotted Round Head 1/4-20 by 5/8 in.	4	4
55	05-0319	..Screw, Machine, Slotted Fillister Head No. 10-32 by 3/8 in.	8	8
56	20-0717-001	..Washer, Lock, 1/4 in. Ext. Tooth	4	4
57	20-0498-023	..Nut, Hex, Twin Whiz, No. 10-32	8	8
58	31-1777	..Clip, Reusable, .250	1	1
59	25-0140	..Stop, Door	1	1
60	25-0105	..Block, Hinge, - Bottom	1	1
61	25-0104	..Block, Hinge, - Top	1	1

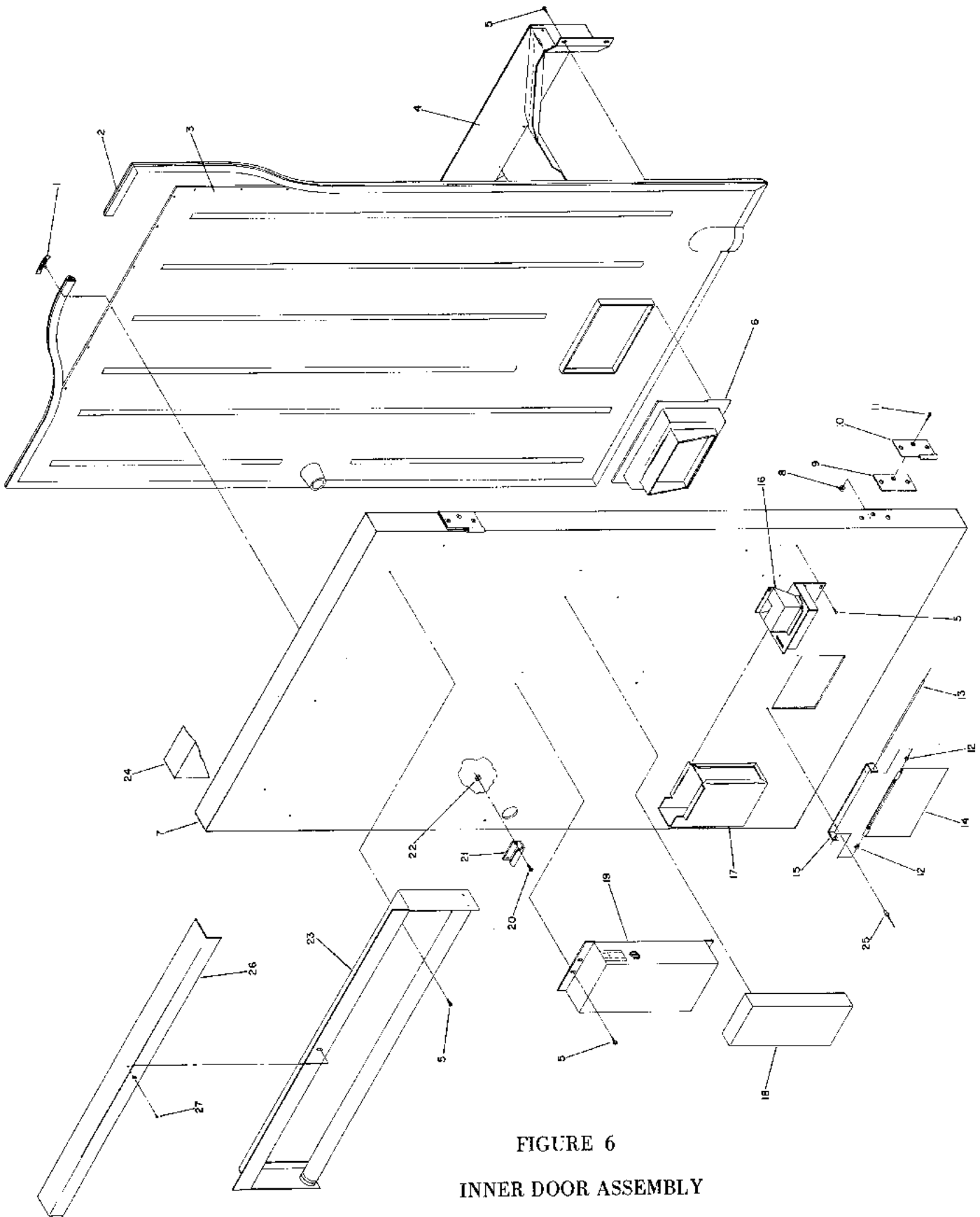


FIGURE 6
 INNER DOOR ASSEMBLY

FIGURE 6 INNER DOOR ASSEMBLY

FIGURE & INDEX NO.	PART NUMBER	DESCRIPTION	QTY. PER ASSEMBLY	
			A	B
6-25	60-0033	Inner Door Assembly SV-250	1	-
6-25	60-0034	Inner Door Assembly SV-315	-	1
1	25-0184	.Fastener, Tinnerman Dart	36	40
2	25-0078	.Gasket, Door SV 250	1	-
	25-0125	.Gasket, Door SV 315	-	1
3	25-0116	.Liner, Inner Door SV 250	1	-
	25-0130	.Liner, Inner Door SV 315	-	1
4	60-0009	.Chute Assembly, Can	1	1
5	20-1141-001	.Screw, Sheet Metal, Phillips Pan Head, No. 8 by ½ in.	24	24
6	25-0158	.Chute, Delivery	1	1
7	60-0019	.Panel, Inner Door - SV 250	1	-
	60-0020	.Panel, Inner Door - SV 315	-	1
8	20-0498-023	.Nut, Hex, Twin Whiz, No. 10-32	6	6
9	25-0059	.Spacer, Hinge	2	2
10	25-0101-002	.Hinge, 3 x 3 Female Butt	2	2
11	20-0469-031	.Screw, Machine, Slotted Flat Head, No. 10-32 by ½ in.	6	6
12	09-1078	.Nut, Tinnerman Tubular Speed	2	2
13	20-0650-002	.Pin, Hinge, 7¼ in.	1	1
14	33-4428	.Door, Vend Port	1	1
15	25-0141	.Bracket, Vend Door Hinge	1	1
16	33-4758	.Bracket Assembly, Coin Chute	1	1
17	60-0029	.Box, Med. Coin	1	1
18	- -	.Coin Mech. - Order by Description	1	1
19	60-0095-000	Relay Housing Assy. (See Fig. 12, Page 38)	1	1
20	20-0469-003	.Screw, Machine, Phillips Truss Head, No. 8-32 by 3/8 in.	2	2
21	25-0188	.Strike, Door	1	1
22	20-0498-022	.Nut, Hex Twin Whiz, No. 8-32	2	2
23	60-0071	.Light Assembly - See Figure 9 Page 30	1	1
24	25-0223-001	.Insulation, Inner Door - SV-250	1	-
	25-0223-002	.Insulation, Inner Door - SV-315	-	1
25	05-0667	.Rivet, Squeeze, 1/8 Dia.	2	2
26	25-0175	.Cover, Light Assembly	1	1
27	31-0057	.Screw, Sheet Metal, Blunt Point, Phillips Pan Head, No. 6 by ¼ in.	1	1
—	25-0277-000	Door Harness (Not Shown)	1	1

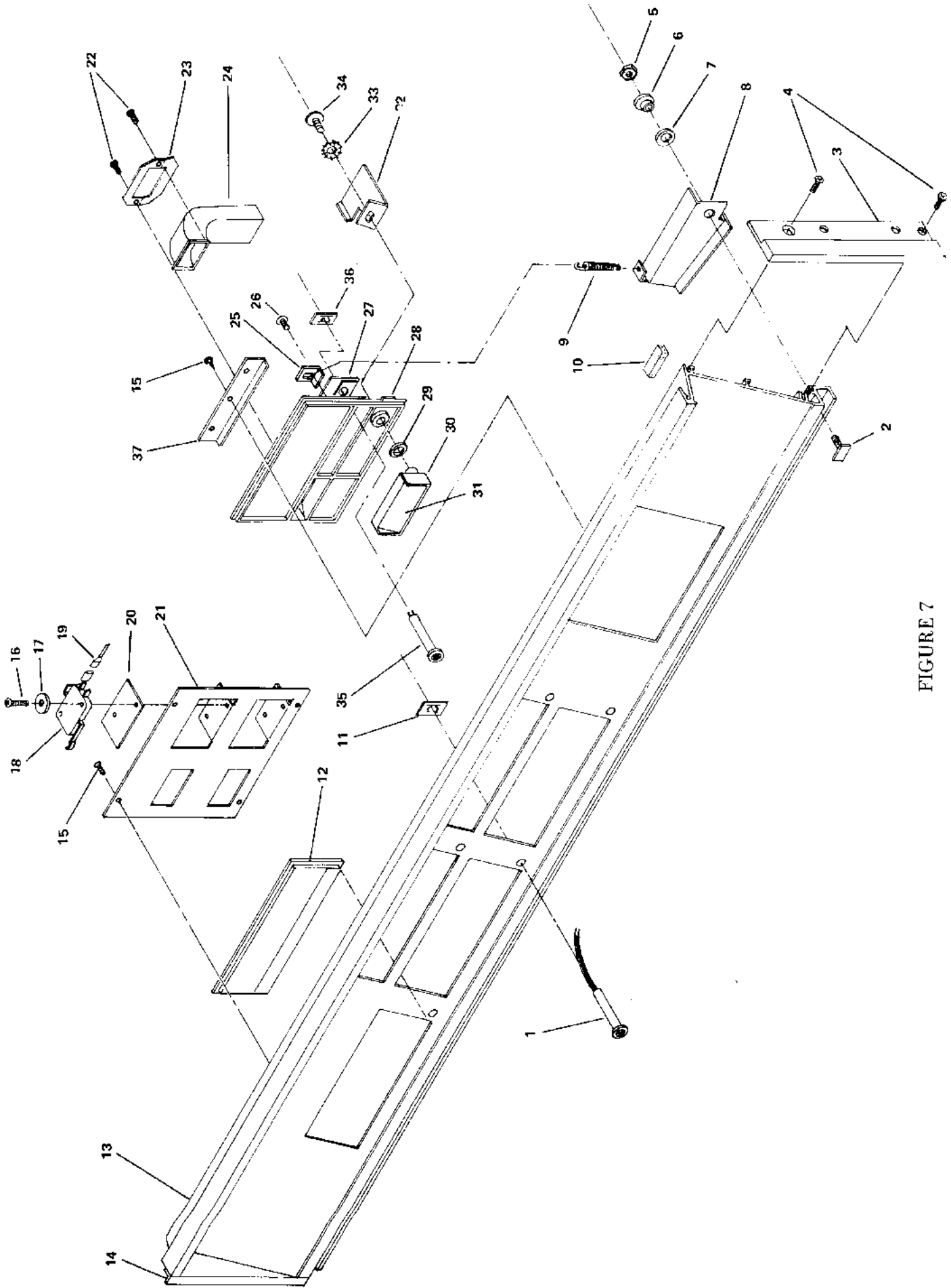


FIGURE 7
DASHBOARD ASSEMBLY

FIGURE 7 DASHBOARD ASSEMBLY

FIGURE & INDEX NO.	PART NUMBER	DESCRIPTION	QTY. PER ASSEMBLY
7-27	60-0002	Dashboard Assembly	R
1	25-0099	.Empty Light	5
2	20-1051-001	.T Bolt No. 8-32 by ½ in.	1
3	25-0086-001	.End, Dashboard, Right-hand	1
4	20-0470-019	.Screw, Thread Cutting, Phillips Flat Head, No. 6-32 by 5/8 in.	4
5	20-0498-026	.Hex Nut, Fogg McLean No. 6-32	1
6	03-0053	.Bushing, Shoulder	1
7	20-0729-011	.Flat Washer No. 10 by .048 - in.	1
8	60-0047	.Reject Lever Follower	1
9	02-1015	.Spring, Return	1
10	06-0006	.Gasket, Airtex Poly, ¼ x ½ in.	30"
11	25-0222	.Pushnut, 7260 (furnished with light)	Ref. 5
12	60-0003	.Selector Button	5
13	25-0038	.Dashboard Panel	1
14	25-0086-002	.End, Dashboard, Left-Hand	1
15	05-0421	.Screw, Thread Cutting, Slotted Pan Head, No. 8 by ¼ in.	19
16	20-0470-004	.Screw, Thread Cutting, Phillips Pan Head, No. 4-40 by 5/8 in.	10
17	20-0798	.Washer, Fibre	5
18	20-2075	.Switch, Selection	5
19	20-1953	.Jumper Wire, Brown, Short	2
	33-2638	.Jumper Wire, Brown, Long	2
20	20-0144	.Insulator, Selection Switch	5
21	33-2624	.Retainer, Selection Button	3
7-	60-0001	.Coin Insert Casting Assembly	1
22	20-0470-008	.Screw, Thread Cutting, Phillips Round Head No. 6-32 by 3/16 in.	2
23	33-4533	.Retainer, Coin Intake Chute	1
24	20-1748	.Chute, Coin Intake	1
25	20-0594	.Clamp, Correct Change Lens	1
26	05-0410	.Screw, Sheet Metal, Slotted Pan Head, Blunt Point, No. 7 by ¼ in.	1
27	25-0076	.Lens, Correct Change	1
28	20-1516	.Casting, Coin Insert	1
29	10-0816	.Washer, Nylon, Coin Release	1
30	33-4283	.Handle, Coin Release	1
31	33-4370	.Decal, Coin Release	1
32	25-0198	.Lever, Coin Release	1
33	20-0717-008	.Washer, Lock, Internal/External Tooth ¼ - in.	1
34	20-0469-020	.Screw, Machine, Phillips Truss Head, ¼-28 by ½ - in.	1
35	25-0099	.Correct Change Light	1
36	25-0222	.Pushnut, 7260 (Furnished with light)	1
37	20-1552	.Retainer, Coin Insert Casting	2
7-	20-2090-001	.Brady Marker No. 1	1
	20-2090-002	.Brady Marker No. 2	1
	20-2090-003	.Brady Marker No. 3	1
	20-2090-004	.Brady Marker No. 4	1

FIGURE 7 DASHBOARD ASSEMBLY

FIGURE & INDEX NO.	PART NUMBER	DESCRIPTION	QTY. PER ASSEMBLY	
			A	B
7-27	20-2090-005	.Brady Marker No. 5	1	
7-27	25-0112	.Wire Harness, Door	1	
7-27	09-0002-711	.Cable Clamp, 5/8 Dia.	1	
7-27	05-0421	.Screw, Thread Cutting, Slotted Pan Head, No. 8 by 1/4 in.	1	

FIGURE 8

8-29	60-0003-000	Selector Button Assembly	5	5
1	33-5107	Clip Tinnermann	2	2
2	33-2615	Button Selector	1	1
3	25-0070	Decal Push & Empty Lite	1	1
4	33-2625	Retainer Flavor Tab	1	1
5	33-2623-xxx	Flavor Tab Per Model	1	1

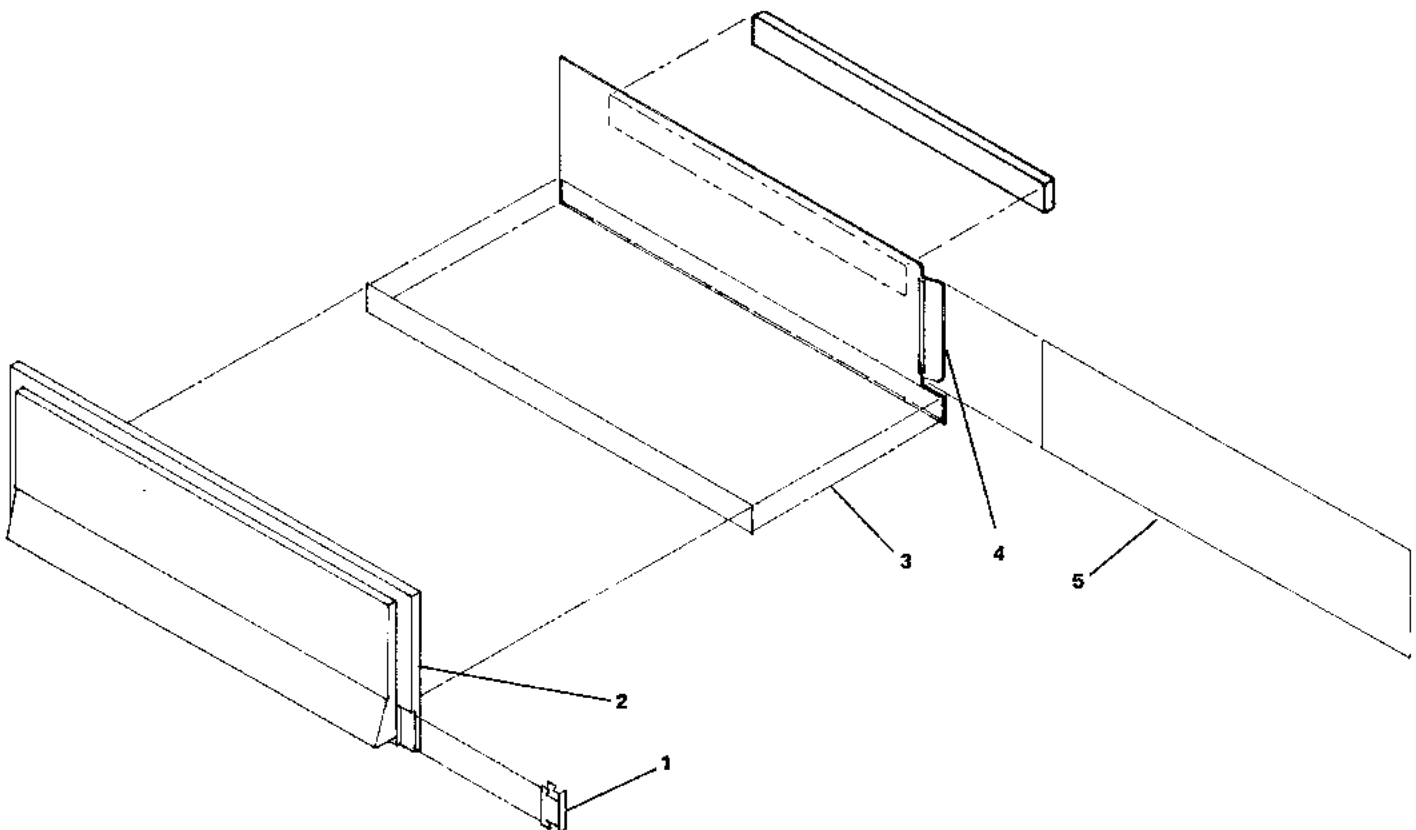


FIGURE 8

SELECTOR BUTTON ASSEMBLY

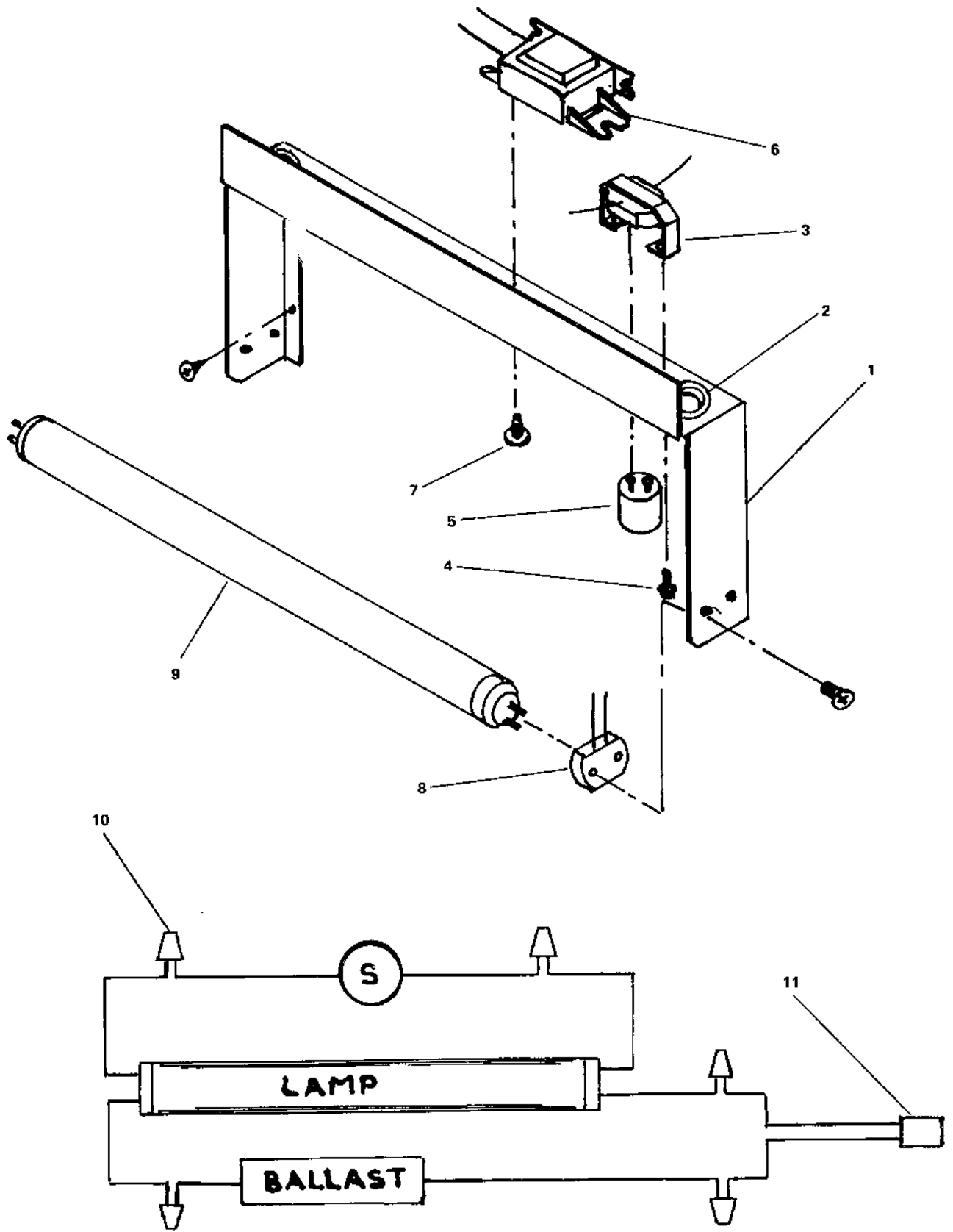


FIGURE 9
LIGHT ASSEMBLY

FIGURE 9 LIGHT ASSEMBLY

FIGURE & INDEX NO.	PART NUMBER	DESCRIPTION	QTY. PER ASSEMBLY	
			A	B
9-30	60-0071	Light Assembly		R
1	25-0183	.Sign Light Mounting Bracket		1
2	33-1303	.Snap Bushing		2
3	18-7190	.Starter Socket		1
4	20-0469-006	.Screw, Machine, Phillips Round Head, No. 6 - 32 by ¼ in.		2
5	15-1100	.Starter, FS-25, 22 Watt		1
6	33-4938	.Ballast, 25 Watt		1
7	31-0057	.Screw, Sheet Metal, Phillips Truss Head, blunt point, No. 6 by ¼ - in.		2
8	18-9063	.Lamp Holder, with Screws		2
9	33-4939	.Lamp, Fluorescent, 25 Watt		1
10	18-7146	.Splice Cap, BUC 2002		5
11	33-2048	.Light Lead Assembly		1

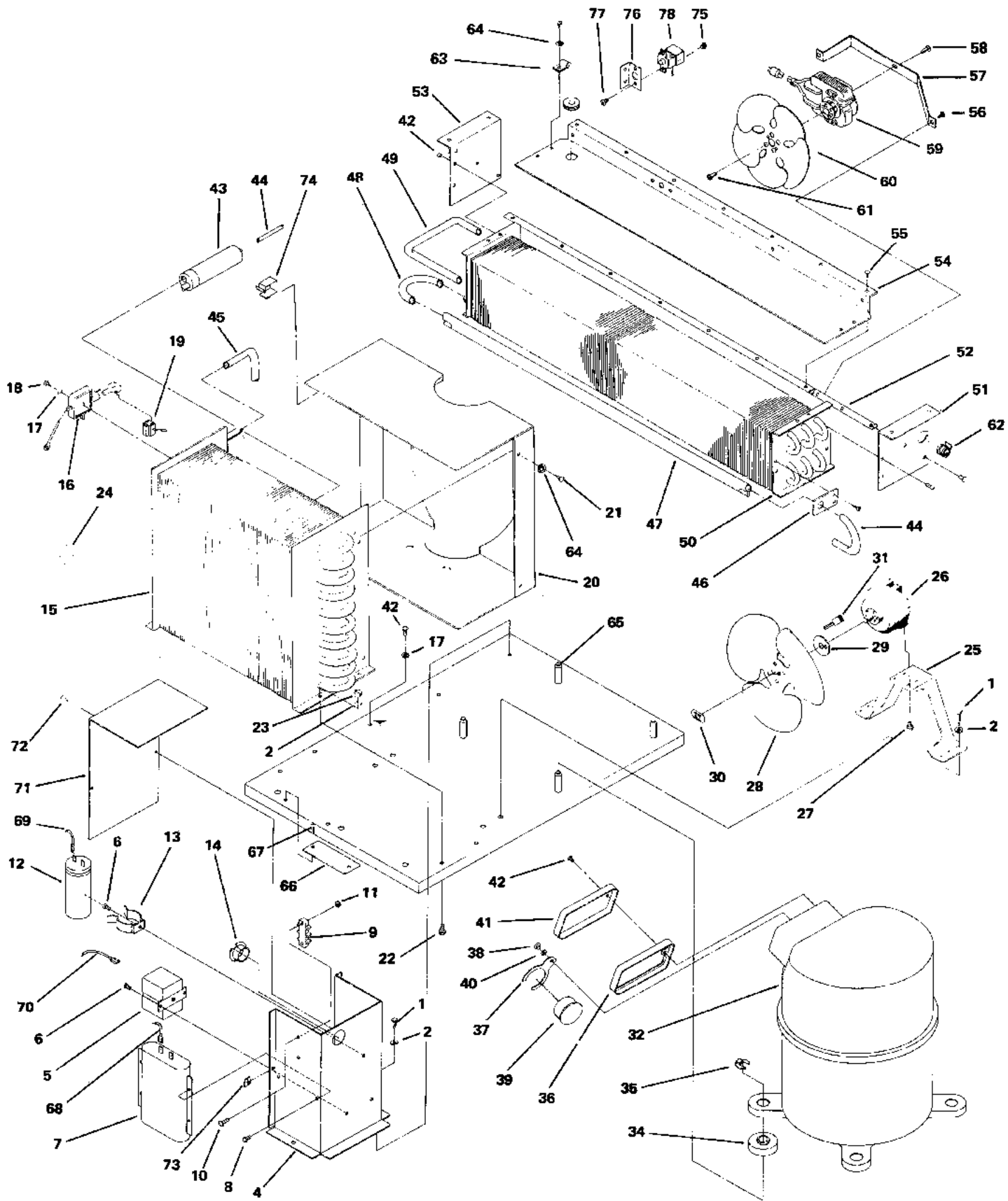


Figure 10
 SANYO REFRIGERATION
 CHASSIS ASSEMBLY

FIGURE 10
SANYO REFRIGERATION CHASSIS ASSEMBLY

FIGURE & INDEX NO.	PART NUMBER	DESCRIPTION	QTY. PER ASSEMBLY	
			A	B
10-32	20-1920-002	Refrigeration Chassis Assembly - SANYO	R	
1	33-2235	.Screw, Thread Rolling, Phillips Truss Head, ¼ - 20 by ½ in.		6
2	15-0778	.Lock Washer, ¼ - in.		6
3	33-4928	.Electrical Box Assembly		1
4	33-4924	..Electrical Box		1
5	33-4780	..Relay Compressor Start		1
6	20-0468-006	..Screw, Sheet Metal, Phillips Truss Head, No. 6 by 3/8 in.		3
7	33-4779	..Capacitor, Compressor Run		1
8	32-0293	..Screw, Thread Rolling, Phillips Pan Head, No. 4-40 by 3/8 in.		2
9	33-2949	..Terminal Block		1
10	20-0469-009	..Screw, Machine, Phillips Truss Head, No. 8-32 by 5/8 - in.		2
11	20-0498-003	..Hex Nut, KEPS, No. 8-32		2
12	33-4778	..Capacitor, Compressor Start		1
13	32-2548	..Spring Clip		1
14	33-1304	..Bushing, Snap		1
15	33-2337	.Condenser Coil ½ H.P.		1
16	33-3030	.Harness, Service		1
17	20-0717-003	.Lock Washer, External Tooth, No. 8		2
18	33-2392	.Screw, Sheet Metal, Type A, Phillips Pan Head, No. 8 by 1 - in.		1
19	18-7765	.Adaptor, Ground, 3-Prong		1
20	33-2406	.Shroud, Condenser Fan		1
21	20-0468-004	.Screw, Sheet Metal, Phillips Pan Head, No. 6 by ½ - in.		4
22	33-2393	.Screw, Cap, Hex Slotted Head ¼ - 20 by 3/8 in.		4
23	20-0498-006	.Hex, Nut, ¼-20		4
24	18-6070	.Clip, Wire Spring, Condenser Shroud		2
25	18-7395	.Bracket, Condenser Fan Motor Mounting		1
26	33-2417	.Motor, 9 Watt Condenser Fan		1
27	18-6154	.Screw, Machine, Phillips Pan Head. No. 8-36 by 5/16 in. (furnished with motor)		4
28	18-7393	.Fan Blade, 10 in.		1
29	18-7394	.Silencer, Condenser Fan		1
30	18-6097	.Nut, Condenser Fan Blade, Redmond 15A25		1
31	33-2431	.Cord, Extension, 22F Plug		1
32	33-4777	.Compressor, ½ HP, 115V, 60HZ, SANYO		1
33	33-2492	.Decal, Warning		1
34	18-9723	.Grommet, TEC		4
35	18-7888	.Clip, Compressor Mounting		4
36	33-4784	.Gasket, Terminal Box Cover		1
37	33-4782	.Clip, Overload Retaining		1
38	33-4786	.Screw, Machine, 6MM by 6MM		1
39	33-4929	.Overload and Lead Assembly		1

FIGURE 10
SANYO REFRIGERATION CHASSIS ASSEMBLY

FIGURE & INDEX NO.	PART NUMBER	DESCRIPTION	QTY. PER ASSEMBLY	
			A	B
10-32				
40	33-4785	Lock Washer, Internal Tooth, ¼ - in.		1
41	33-4783	.Cover, Terminal Box		1
42	20-0468-003	.Screw, Sheet Metal, Phillips Truss Head No. 8 by 3/8 in.		20
43	33-2433	.Drier, Dual Inlet		1
44	33-4921	.Suction Line and Capillary Tube Assembly		1
45	33-4923	.Discharge Line		1
46	33-2384	.Bracket, Accumulator Tube Support		1
47	33-2402	.Accumulator, 3/4 - in. O.D.		1
48	33-2422	.Tube, Accumulator Connecting		1
49	33-2423	.Tube, Capillary Connecting		1
50	33-2400	.Coil, Evaporator		1
10-	33-2494	.Evaporator Fan and Shroud Assembly		1
51	33-2348	..End Plate, Evaporator, Right Hand		1
52	33-2351	..Shroud, Evaporator Fan		1
53	33-2347	..End Plate, Evaporator Left Hand		1
54	33-2357	..Baffle, Evaporator Top		1
55	05-0663	..Rivet, Pop		13
56	20-0468-003	..Screw, Sheet Metal, Phillips Truss Head, No. 8 by 3/8 - in.		8
10-	33-1298	..Motor and Fan Assembly		2
57	33-0391	...Mount, Motor		1
58	18-7209	...Screw, Machine, Phillips, Round Head, SEMS, No. 10-32 by 5/16 - in.		2
59	33-1297	...Motor, 4½ Watt Evaporator Fan		1
60	18-6825	...Fan Blade, CCW		1
61	18-6811	...Screw, Machine, Slotted Round Head, No. 3-48 by 3/16 - in. (furnished with fan motor)		2
62	09-1051-801	.Bushing, Strain Relief		1
63	09-0002-704	.Clamp, Cable		1
64	20-0729-004	.Washer, Flat		5
65	60-0069	.Base Plate, SANYO		1
66	33-2240	.Nameplate, Refrigeration System		1
67	31-0475	.Drive Screw, Round Head, No. 4		2
68	33-4930	.Wire, Black Dual Jumper		1
69	33-4931	.Wire, Black Jumper		1
70	33-4932	.Wire, Red Jumper		2
71	33-4925	.Cover, Electrical Box		1
72	20-0468-006	.Screw, Sheet Metal, Phillips Round Head, No. 6 by 3/8 - in.		2
73	33-4614	.Clip, Tinnerman		2
74	33-3096	.Clip, Tinnermann Square Back		2
75	20-0469-016	.Screw, Machine, Phillips Truss Head No. 6-32 by 5/16 - in.		5
76	33-2408	.Bracket, Thermostat		1
77	20-0469-003	.Screw, Machine, Phillips Round Head, No. 8-32 by 3/8 - in.		2
78	33-4123-001	.Thermostat		1

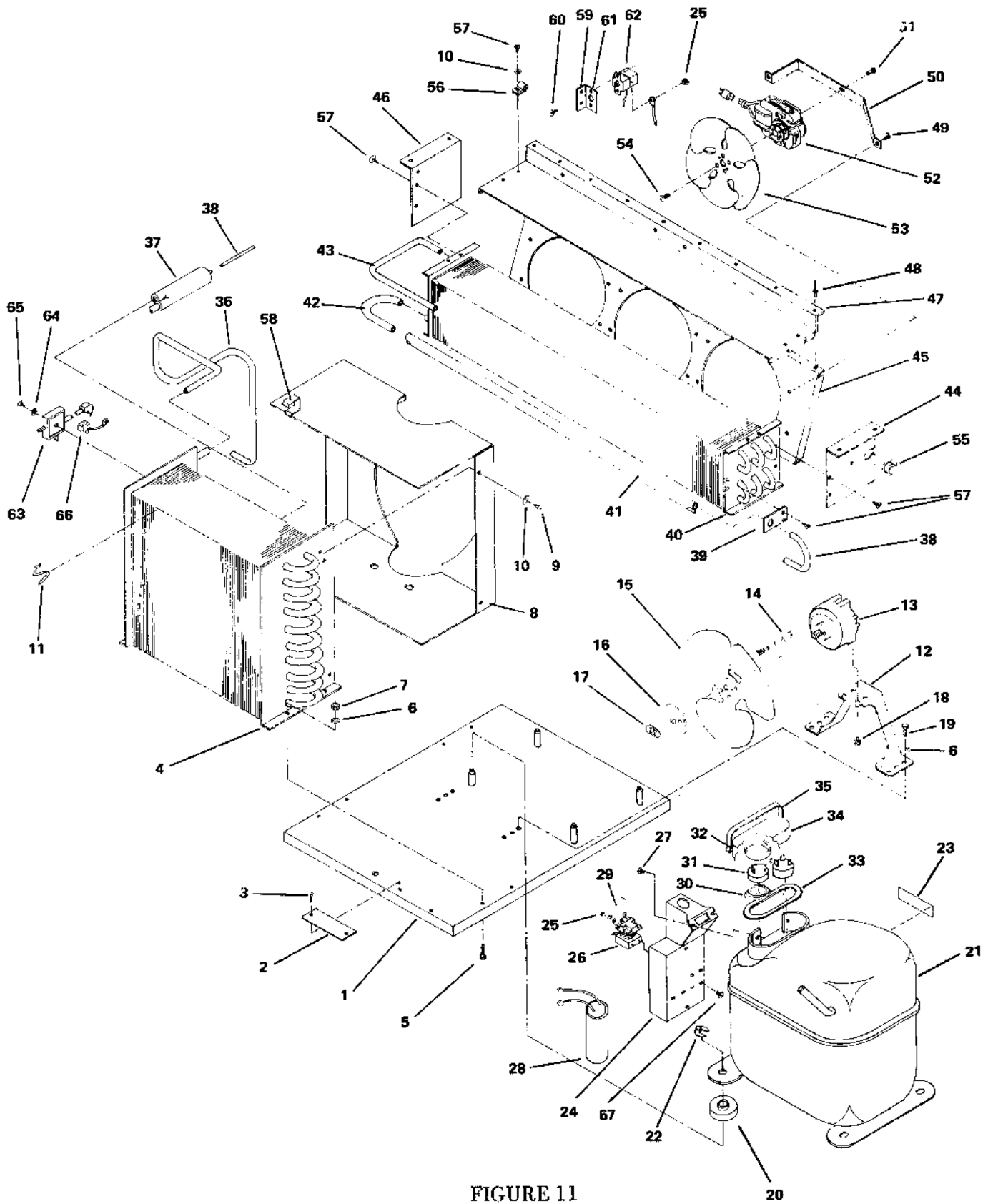


FIGURE 11

TECUMSEH REFRIGERATION
CHASSIS ASSEMBLY

FIGURE 11
TECUMSEH REFRIGERATION CHASSIS ASSEMBLY

FIGURE & INDEX NO.	PART NUMBER	DESCRIPTION	QTY. PER
			ASSEMBLY A & B
11-35	20-1920-000	Refrigeration Chassis Assembly - Tecumseh	R
1	60-0078	.Base Plate, Tecumseh	1
2	33-2440	.Nameplate, Refrigeration System	1
3	31-0475	.Drive Screw, Round Head, No. 4	2
4	33-2337	.Condenser Coil, ½ H. P.	1
5	33-2393	.Screw Cap, Hex Head, ¼-20 by 3/8 in.	4
6	15-0778	.Washer, Lock, ¼ in.	10
7	20-0498-006	.Hex Nut, ¼ - 20	4
8	33-2406	.Shroud, Condenser Fan	1
9	20-0468-004	.Screw, Sheet Metal, Phillips Pan Head No. 6 by ½ - in.	4
10	20-0729-004	.Washer, Flat	5
11	18-6070	.Clip, Wire Spring, Condenser Shroud	2
12	18-7395	.Bracket, Condenser, Fan Mounting	1
13	33-2417	.Motor, 9 Watt Condenser Fan	1
14	33-2430	.Cord, Extension, 22 F Plug	1
15	18-7393	.Fan Blade, 10 - in.	1
16	18-7394	.Silencer, Condenser Fan	1
17	18-6097	.Nut, Condenser Fan Blade, Redmond 15A25	1
18	18-6154	.Screw, Machine Phillips, Pan Head No. 8-36 by 5/16 in. (furnished with motor)	4
19	33-2235	.Screw, Thread Rolling, Phillips Truss Head, ¼ - 20 by ½ - in.	4
20	18-9723	.Grommet, TEC	4
21	33-0952	.Compressor, ½ H.P. Tecumseh	1
22	18-7888	.Clip, Compressor Mounting	4
23	33-2492	.Decal, Warning	1
24	25-0258	.Box, Electrical (Tec 90462)	1
25	20-0469-016	.Screw, Machine, Phillips Truss Head No. 6-32 by 5/16 - in.	5
26	33-0958	.Relay, Compressor Start	1
27	20-0470-017	.Screw, Thread Cutting, Phillips Round Head, No. 10-32 by 3/8 - in.	2
28	33-0959	.Capacitor, Start, 165 VAC, 161-193 MFD	1
29	25-0164	.Wire leads, (red, yellow, black)	1
30	33-0955	.Spring, Overload	1
31	33-0953	Overload ½ HP Compressor	1
32	33-1102	.Adaptor, Compressor Overload	1
33	33-1103	.Gasket, Terminal Box Cover	1
34	33-0956	.Cover, ½ HP Terminal Box	1
35	33-0954	.Bale Strap, ½ HP Cover	1
36	33-2436	.Discharge Line	1
37	33-2433	.Drier, Dual Inlet	1
38	33-2439	.Suction Line and Capillary Tube Assembly	1
39	33-2384	.Bracket, Accumulator Tube Support	1
40	33-2400	.Coil, Evaporator	1

FIGURE 11
TECUMSEH REFRIGERATION CHASSIS ASSEMBLY

FIGURE & INDEX NO.	PART NUMBER	DESCRIPTION	QTY. PER ASSEMBLY	
			A	B
11-35				
41	33-2402	.Accumulator, 3/4 - in. O.D.	1	
42	33-2422	.Tube, Accumulator Connecting	1	
43	33-2423	.Tube, Capillary Connecting	1	
11-	33-2494	.Evaporator Fan and Shroud Assembly	1	
44	33-2348	..End Plate, Evaporator, Right-Hand	1	
45	33-2351	..Shroud, Evaporator Fan	1	
46	33-2347	..End Plate, Evaporator, Left-Hand	1	
47	33-2357	..Baffle, Evaporator Top	1	
48	05-0663	..Rivet, Pop	13	
49	20-0468-003	..Screw, Sheet Metal, Phillips Truss Head, No. 8 by 3/8 - in.	8	
11-	33-1298	..Motor and Fan Assembly	2	
50	33-0391	...Mount, Motor	1	
51	18-7209	...Screw, Machine, Phillips Round Head, SEMS: No. 10-32 by 5/16 - in.	2	
52	33-1297	...Motor, 4½ Watt, Evaporator Fan	1	
53	18-6825	...Fan Blade, CCW	1	
54	18-6811	...Screw, Machine, Slotted Round Head, No. 3-48 by 3/16 - in. (furnished with fan motor)	2	
55	09-1051-801	.Bushing, Strain Relief	1	
56	09-0002-704	.Clamp, Cable	1	
57	20-0468-003	.Screw, Sheet Metal, Phillips Round Head, No. 6 by 3/8 - in.	7	
58	33-3096	.Clip, Tinnerman, Square Back	2	
59	33-2408	.Bracket, Thermostat	1	
60	20-0469-003	.Screw, Machine, Phillips Round Head No. 8-32 by 3/8 - in.	2	
61	33-3084	.Decal, Thermostat	1	
62	33-4123-001	.Thermostat	1	
63	33-3030	.Harness, Service	1	
64	20-0717-003	.Washer, Lock, External Tooth, No. 8	1	
65	33-2392	.Screw, Sheet Metal, Phillips Pan Head, No. 8 by 1 - in.	1	
66	18-7765	.Adaptor, Ground, 3-Prong	1	
67	20-0469-003	.Screw, Machine, Phillips Round Head, No. 8 - 32 by 3/8 - in.	1	

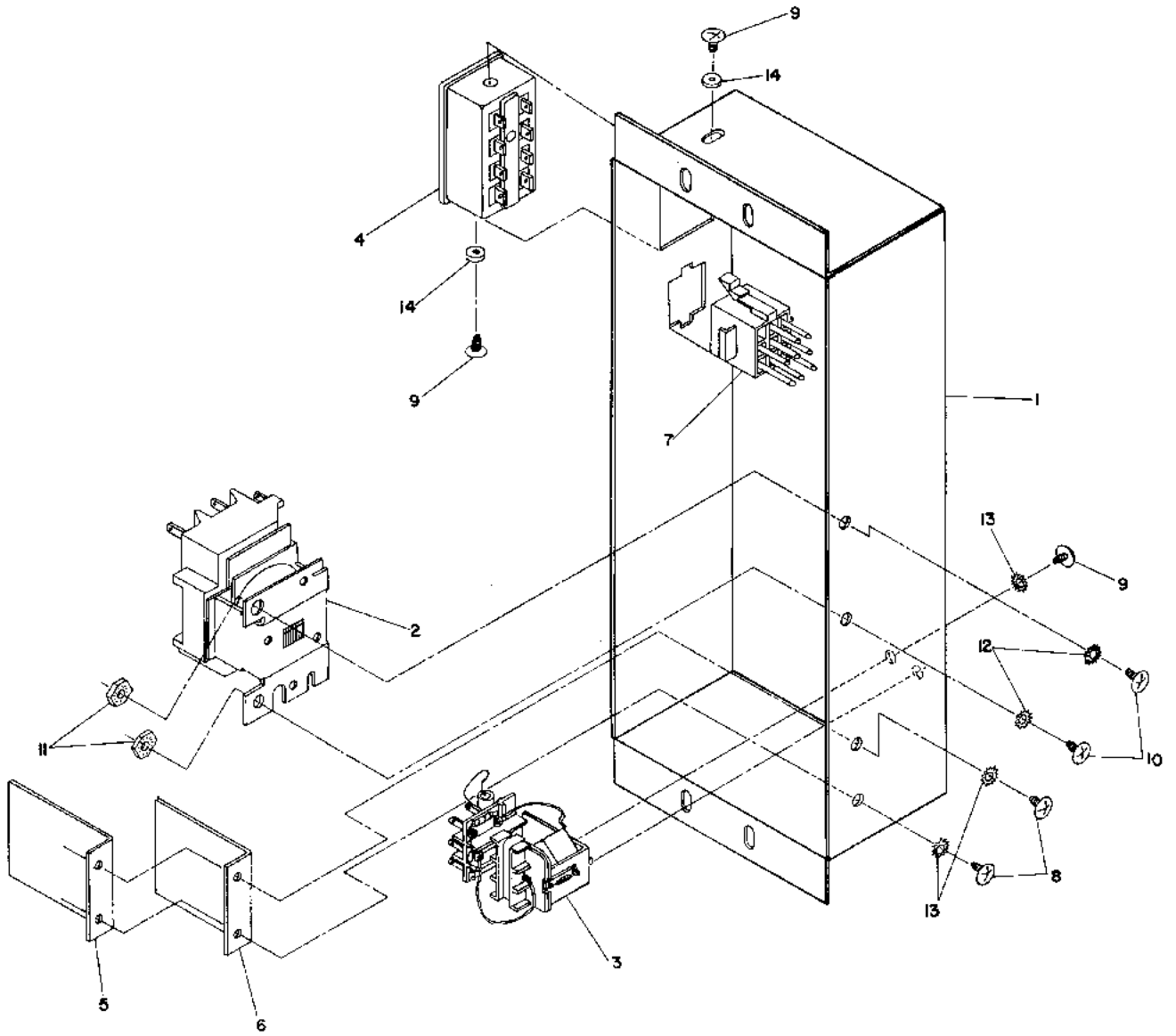


FIGURE 12
RELAY HOUSING ASSEMBLY

FIGURE 12
RELAY HOUSING ASSEMBLY

FIGURE & INDEX NO.	PART NUMBER	DESCRIPTION	QTY. PER ASSEMBLY	
			A	B
12-38	60-0095-000	Relay Housing Assembly	1	1
1	25-0275-000	Relay Housing	1	1
2	20-0430-000	Credit Relay	1	1
3	20-1754-000	Time Delay Relay	1	1
4	33 607	Coin Mech Plug	1	1
5	33-2070-000	Relay Shield	1	1
6	33-2071-000	Insulator	1	1
7	25-0278-000	Relay Harness	1	1
8	31-0057-000	No. 6 x 1/4 Phil. Truss Hd. Type "B" S.M.S.	2	2
9	20-0469-006	No. 6-32 x 1/4 Phil. Rd. Hd. M.S.	3	3
10	18-6150-000	No. 8-32 x 3/8 Phil. Rd. Hd. M.S.	2	2
11	50513	No. 8-32 Twin Whiz Nut	2	2
12	50584	No. 8 Ext. Shake Proof Washer	2	2
13	50581	No. 6 Ext. Shake Proof Washer	3	3
14	50617	5/32 I.D. x 3/8 O.D. x 3/64 Thk. Flat Washer	2	2

